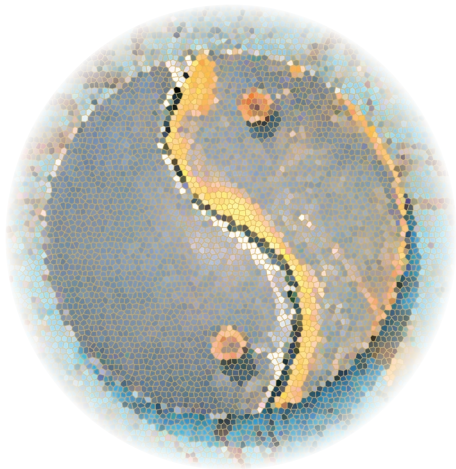

SVHE Institute on Religion in Curriculum and Culture of Higher Education



Society for Values in Higher Education

With support from the Jessie Ball duPont Fund

Religion builds communities, but it can also fracture societies. Nowhere is that clearer than on the college campus.

Today, students flock to religion courses and many are involved in student religious organizations, but in the classroom and across campus, religious differences often inspire disagreement and angry confrontation. Because of their religious commitments, many students are challenging their professors in areas ranging from stem cell research and evolutionary biology to religiously motivated world conflict. Campus politics is often dominated by controversial issues such as abortion and gay rights, issues which bring to light deep differences in religious belief.

One response to this conflict is to attempt to limit or ignore the discussion of religion across campus. Another is to find productive ways of recognizing and addressing the important role that religion plays in American democracy and a global society.

Religion's centrality in contemporary public life makes it an inescapable object of study and reflection; moreover, study of religion should extend beyond the borders of religious studies departments to include the larger curriculum. The academy is responsible for creating a campus culture that makes room for religious diversity.

-
- ☯ *Religion builds communities, but it can also fracture societies. Nowhere is that clearer than on the college campus.*
 - ☯ *Religion's centrality in contemporary life makes it an inescapable object of study and reflection; moreover, study of religion should extend beyond the borders of religious studies departments to include the larger curriculum.*
 - ☯ *This Institute seeks to provide the opportunity to rethink the place of religion in higher education and to provide skills to address the difficult questions generated by religious differences in the classroom, across campus and in a diverse democracy and changing global world.*
-

This Institute seeks to provide the opportunity to rethink the place of religion in higher education and to provide skills to address the difficult questions generated by religious differences in the classroom and across campus. Its goal is to produce exemplary curricular and co-curricular models reflecting the needs of the diverse participating institutions and their students.

For example:

- A model, mini-unit on learning about Islam would be invaluable for numbers of courses in which understanding of this tradition is essential.
- Science and religion as a general area for study would welcome specific topics, including the tension between faith and evolution.
- Exploring the role of religion and ethics for professions such as medicine, law and business could be made widely available by means of on-line education.

Such program opportunities represent the kind of campus initiatives we welcome.

With support from the Jessie Ball duPont Fund the Society for Values in Higher Education (SVHE) invites applications from colleges and universities to develop model programs to address religious literacy, particularly as elaborated in the “SVHE Wingspread Declaration on Religion and Public Life: Engaging Higher Education” (see www.svhe.org).

The ten campuses selected, each normally consisting of a team of 3 faculty and 1 student, will participate in the SVHE Institute/Workshop at the Trinity Conference Center (West Cornwall, CT) June 15-20, 2008. There they will develop curricular and/or co-curricular programs related to issues of religion and public life to be implemented and assessed during the following academic year(s) and afterward widely distributed by means of a monograph summarizing the results.

Participating campuses will support their faculties’ experience at the Institute/Workshop by matching SVHE/duPont funds for room, board and travel costs as follows:

3 faculty @ \$500 each	\$1,500
1 student @ \$1,000 each	\$1,000*
Total	\$2,500

**Encouraged, not required*

For further information, including an application form, contact Robert Spivey – bspivey@foundation.fsu.edu or (850) 644-0767.

Rolling application – deadline March 31.

Institute Faculty

Marvin Kaiser

co-director, dean of the College of Arts and Sciences, Portland State University; SVHE executive director; sociology of religion.

Robert Spivey

co-director, former chair, Department of Religion, Florida State University; former executive director of the American Academy of Religion; SVHE associate executive director; Biblical studies.

Miriam Rosalyn Diamond

coordinator, faculty developer, editor-author of Encountering Faith in the Classroom (2008, Stylus); educational processes.

Allen Dunn

professor, Department of English, University of Tennessee, Knoxville, editor, Soundings: An Interdisciplinary Journal; English literature.

Richard B. Miller

professor, Department of Religious Studies, Indiana University; director, Poynter Center for the Study of Ethics and American Institutions; religious ethics.

A. Kevin Reinhart

associate professor, Department of Religion, Dartmouth College; Islamic studies.

Nancy Thomas

director, the Democracy Imperative at the University of New Hampshire, senior associate with Everyday Democracy (formerly Study Circles Resource Center) and former director of SVHE's Democracy Project; legal issues and deliberative democracy



Society for Values in Higher Education

c/o Portland State University
PO Box 751-SVHE
Portland, OR 97207

(503) 725-2575 | (503) 725-2577 fax

society@pdx.edu
www.svhe.org